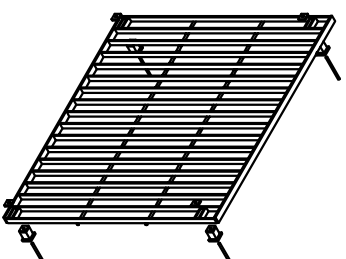
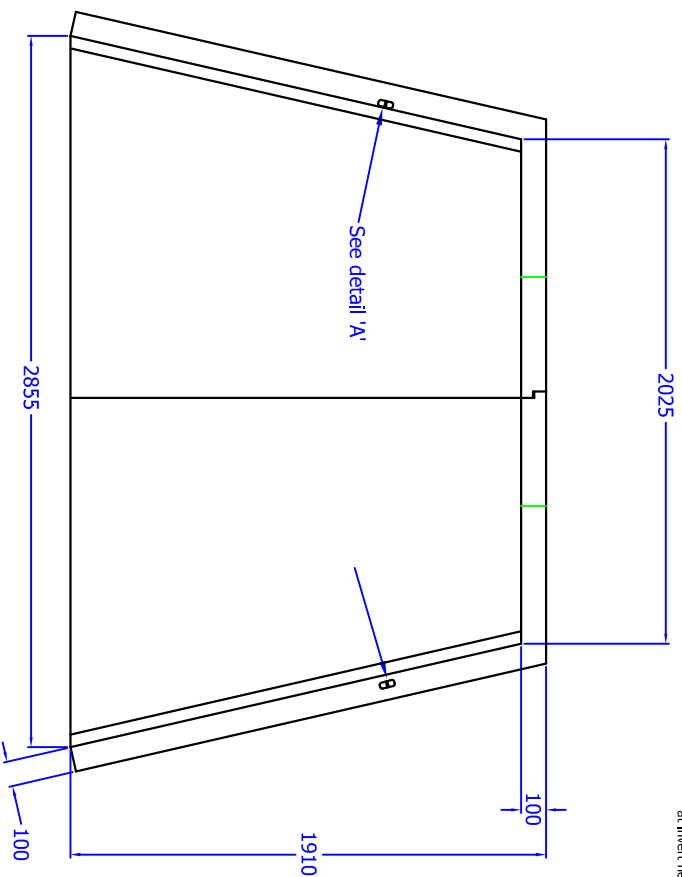
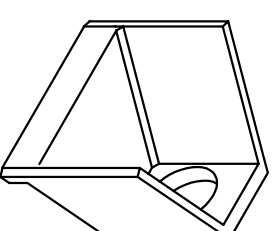


Opening in back wall cast to suit the outside diameter of the pipe at invert height required.



Grating manufactured from 40 x 10 flat at 110mm centres spaced 75mm away from the back wall. Fully Welded and hot dip galvanised.

H20C D HEADWALL (DRAINAGE OUTFALL)



Universal Lifting Eye



Detail 'A'
Cast in anchor pin

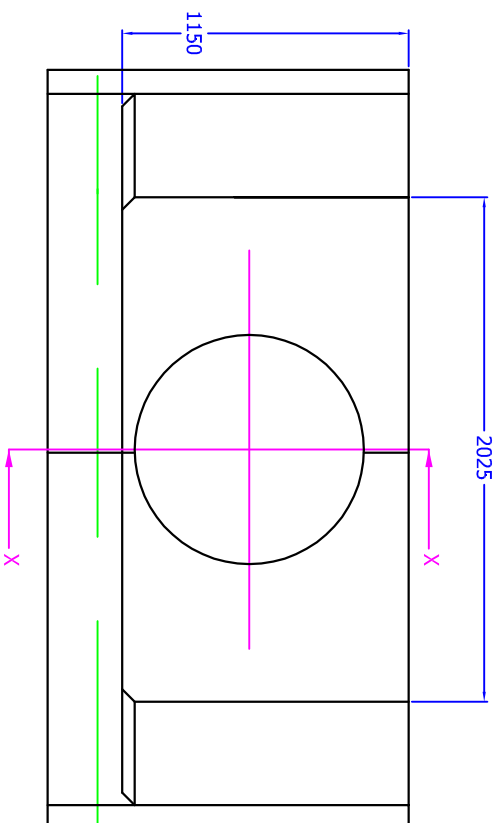
Installation

Units should be bedded on minimum 100mm of semi-dry concrete. Sit the headwall level or with a slight fall 1:50 from pipe to spill mouth.

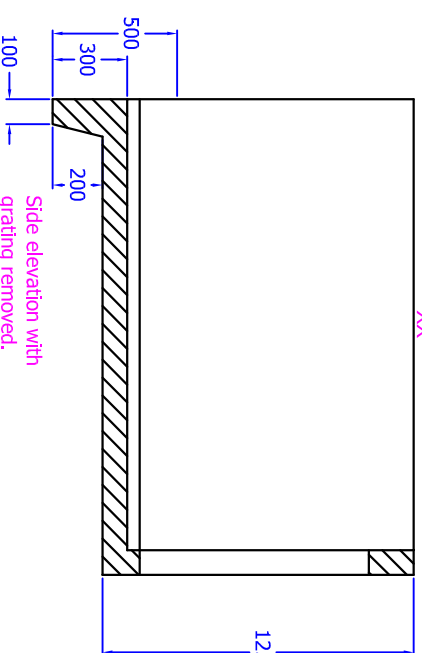
Material: Reinforced Concrete

Weight approximately 3100kg

All dimensions in mm



Section XX



ALTHON LIMITED, VULCAN ROAD, SOUTH NORWICH, NRS 2AF
TEL: 01903 488700 FAX: 01903 488588

Drwg. No. H20C D