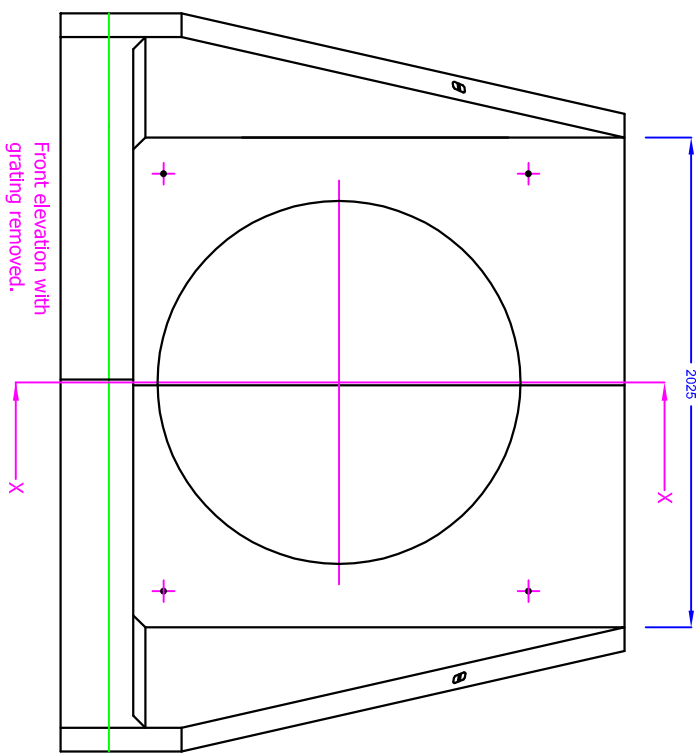
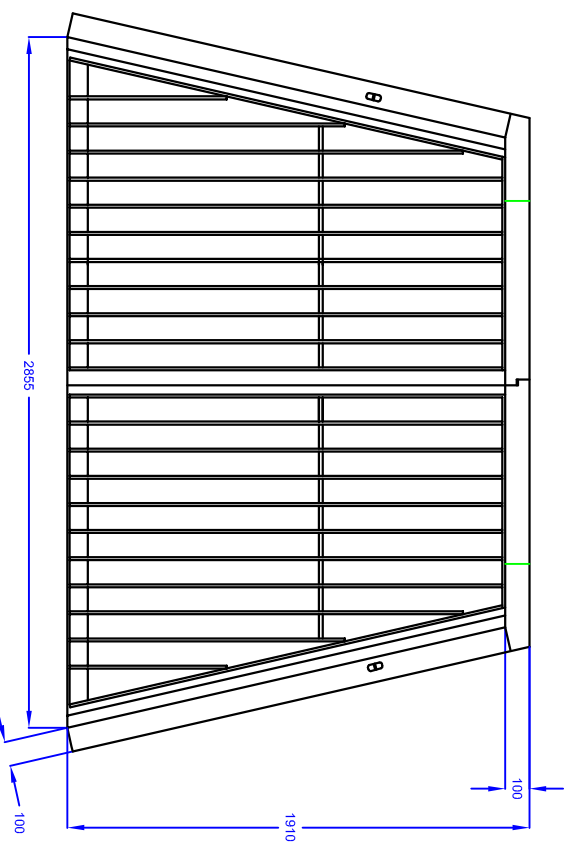
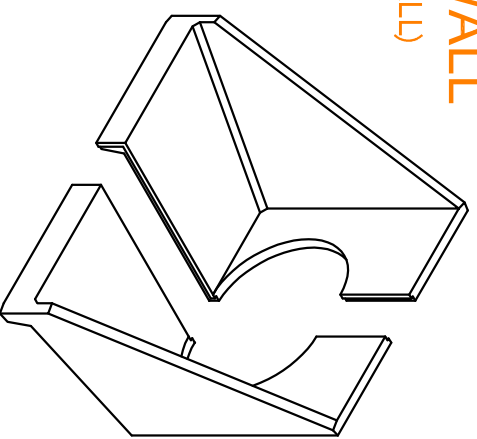


H20CC HEADWALL (DRAINAGE OUTFALL)



Front elevation with
grating removed.

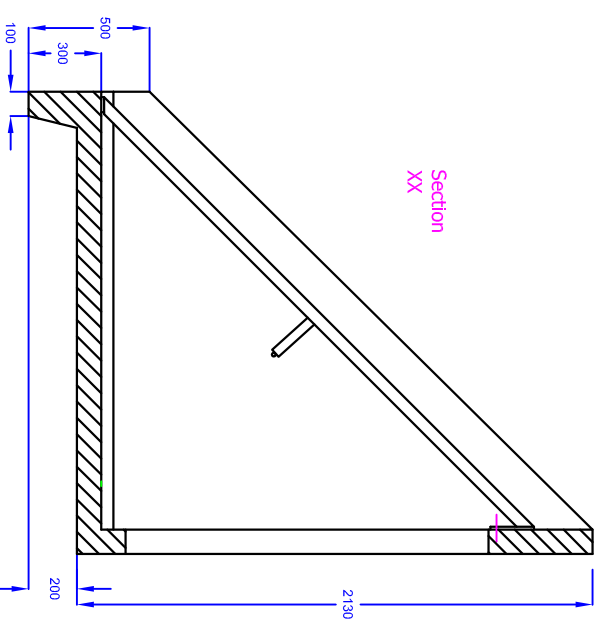


Universal Lifting Eye



Detail 'A'
Cast in anchor pin

Section XX



Installation

Units should be bedded on minimum 100mm of semi-dry concrete. Sit the headwall level or with a slight fall 1:50 from pipe to spill mouth.

Material: Reinforced concrete
Weight approximately 4500kg
All dimensions in mm



Drig. No. H20C c

MALTHON LIMITED
TEL: 01603 488770
FAX: 01603 488588