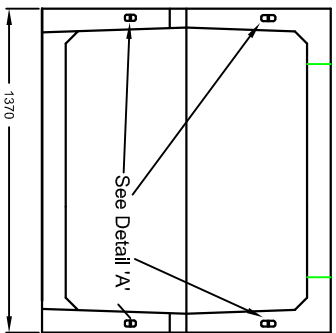
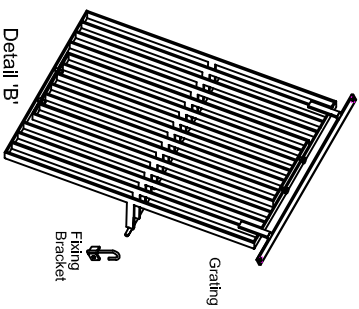


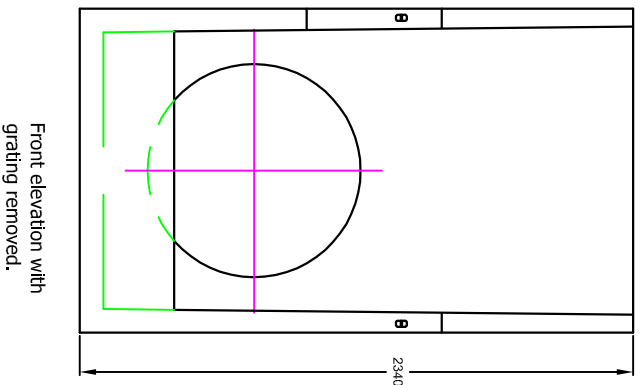
Plan View with
grating removed.



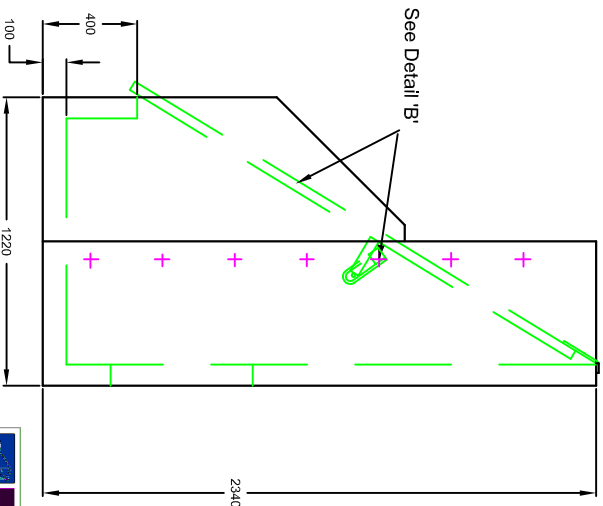
Opening cast into
back wall to suit the
outside diameter of
the pipe at invert as
required.



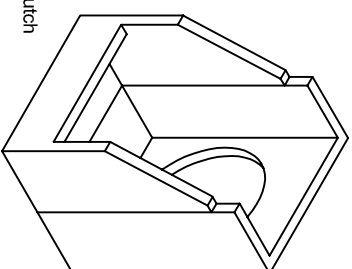
Detail 'B'



Front elevation with
grating removed.



TWO PIECE HEAVY DUTY SILT TRAP INLET 2PHDST H



Lifting Ring Clutch



Cast In Universal Anchor Point

Detail 'A'

Installation
Units should be bedded on minimum
100mm of semi-dry concrete. Sit the
headwall level with the front sill being set
normally at ditch bed level. For full
detailed installation instructions contact
ALTHON Ltd, 01603 488700

Material: Reinforced concrete
Weight approximately 185kg

All dimensions in mm

Althon Ltd
Vulcan Rd South
Norwich NR6 6AF
t: 01603 488700
f: 01603 488598
www.althon.co.uk

